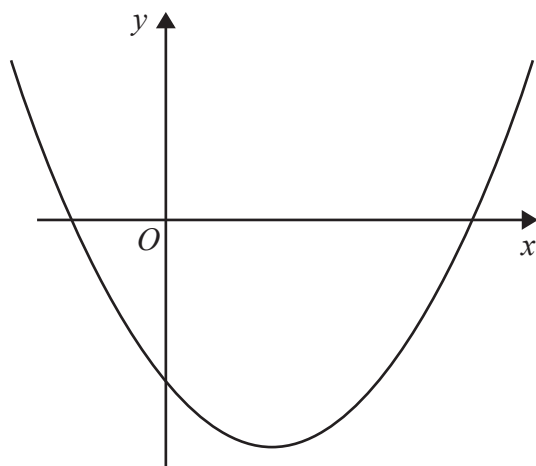


DO NOT WRITE IN THIS AREA

DO NOT WRITE IN THIS AREA

DO NOT WRITE IN THIS AREA

17 Here is a sketch of a curve.



The equation of the curve is $y = x^2 + ax + b$ where a and b are integers.

The points $(0, -5)$ and $(5, 0)$ lie on the curve.

Find the coordinates of the turning point of the curve.

(.....,))

(Total for Question 17 is 4 marks)

