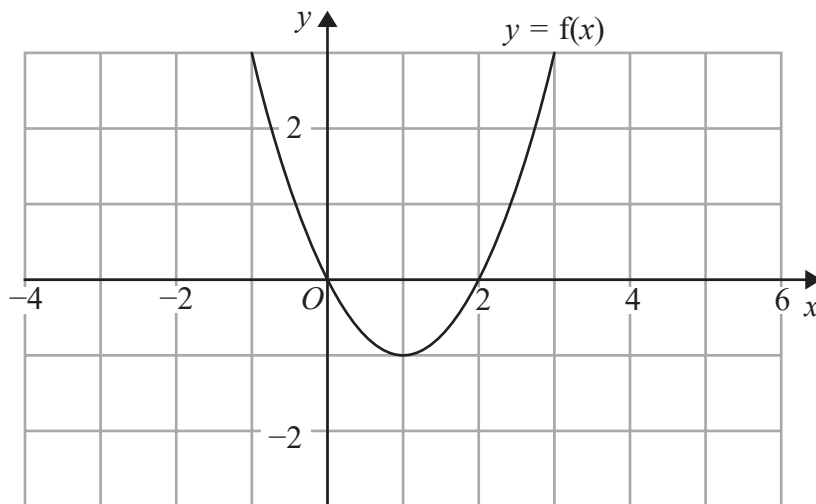
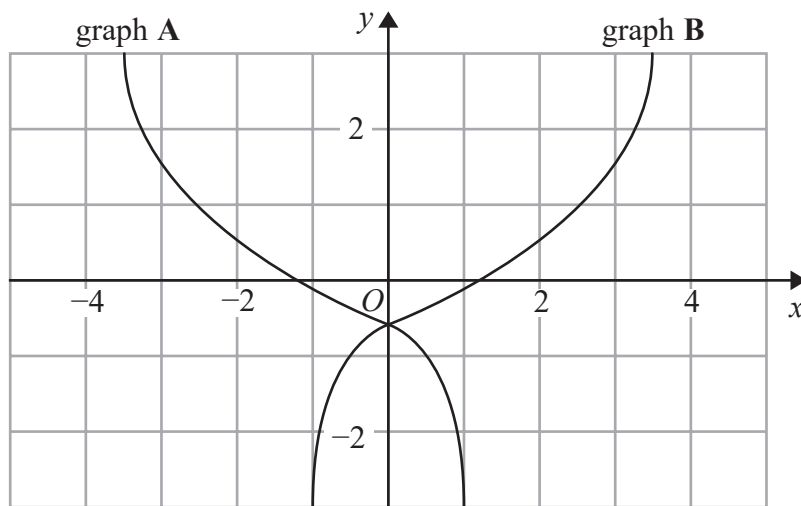


18 The graph of $y = f(x)$ is shown on the grid below.



(a) On the grid above, sketch the graph of $y = f(x - 2)$

(1)



On the grid, graph A has been reflected to give graph B.

The equation of graph A is $y = g(x)$

(b) Write down the equation of graph B.

(1)

(Total for Question 18 is 2 marks)

