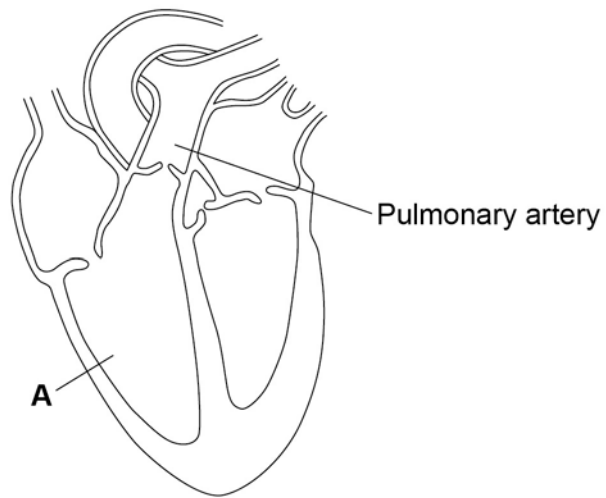


0 1**Figure 1** shows a diagram of the human heart.**Figure 1****0 1**. **1**What part of the heart is labelled **A**?**[1 mark]**Tick **one** box.Aorta Atrium Valve Ventricle

0 1 . **2** Where does the pulmonary artery take blood to?

[1 mark]

Tick **one** box.

Brain

Liver

Lungs

Stomach

0 1 . **3** Circle a valve on **Figure 1**.

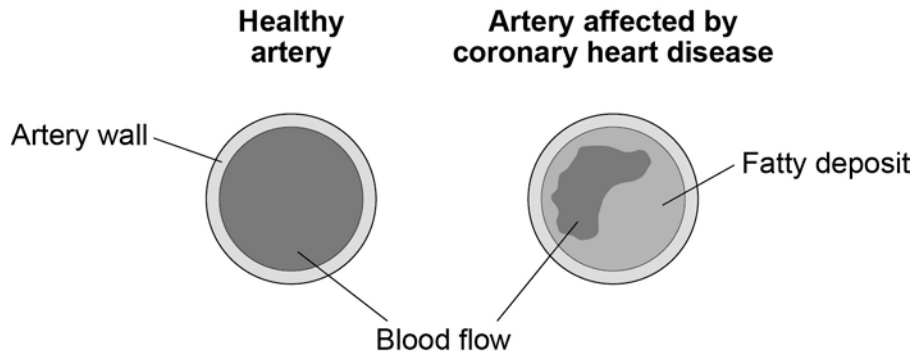
[1 mark]

Question 1 continues on the next page

The coronary arteries supply blood to the heart.

Figure 2 shows two coronary arteries.

Figure 2



0 1 . **4** Describe **two** ways the healthy artery is different from the artery affected by coronary heart disease. **[2 marks]**

- 1 _____

- 2 _____

0 1 . **5** What can be used to treat people with coronary heart disease? **[2 marks]**

Tick **two** boxes.

- | | |
|-------------|--------------------------|
| Antibiotics | <input type="checkbox"/> |
| Hormones | <input type="checkbox"/> |
| Statins | <input type="checkbox"/> |
| Stent | <input type="checkbox"/> |
| Vaccination | <input type="checkbox"/> |

0 1 . **6** Suggest **two** risk factors for coronary heart disease.

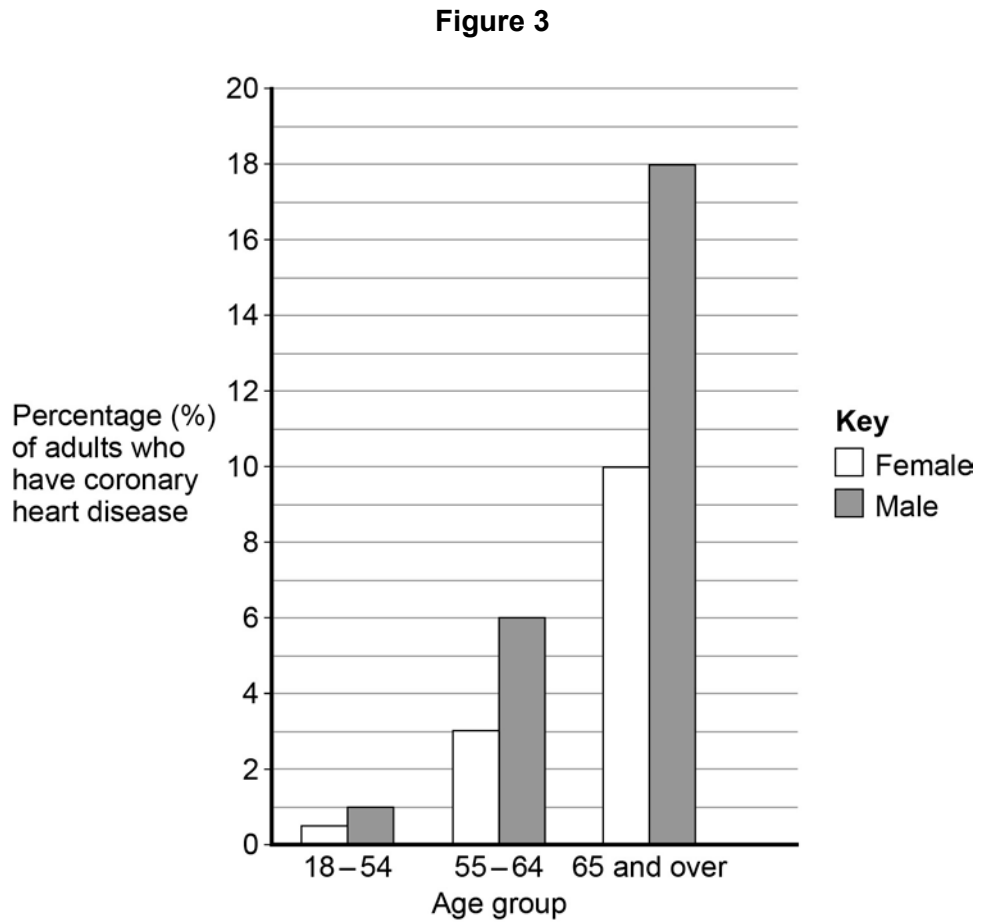
[2 marks]

1 _____

2 _____

Question 1 continues on the next page

Figure 3 shows the percentages of adults in the UK who have coronary heart disease.



0 1 . **7** Calculate the difference in the percentage of male and female adults aged 65 and over who have coronary heart disease.

[1 mark]

_____ %

0 1 . **8** Which is the correct conclusion for the data in **Figure 3**?

[1 mark]

Tick **one** box.

Children do **not** suffer from coronary heart disease

More males suffer from coronary heart disease than females

More younger people suffer from coronary heart disease than older people

Turn over for the next question

Question 1

Question	Answers	Extra information	Mark	AO / Spec. Ref.
01.1	ventricle		1	AO1/1 4.2.2.2
01.2	lungs		1	AO1/1 4.2.2.2
01.3	valve circled on heart		1	AO1/1 4.2.2.4
01.4	no fatty deposit		1	AO2/1 4.2.2.4
	healthy artery is wider / bigger hole / has more blood flow		1	AO2/1 4.2.2.4
01.5	statins		1	AO1/1 4.2.2.4
	stent		1	AO1/1 4.2.2.4
01.6	any two from: <ul style="list-style-type: none"> • smoking • high-fat diet • lack of exercise 	allow: <ul style="list-style-type: none"> • overweight / obese • having high blood pressure • having high cholesterol 	2	AO1/1 4.2.2.6
01.7	8 (%)		1	AO2/1 4.2.2.4
01.8	more males have coronary heart disease than females		1	AO3/2b 4.2.2.4
Total			11	