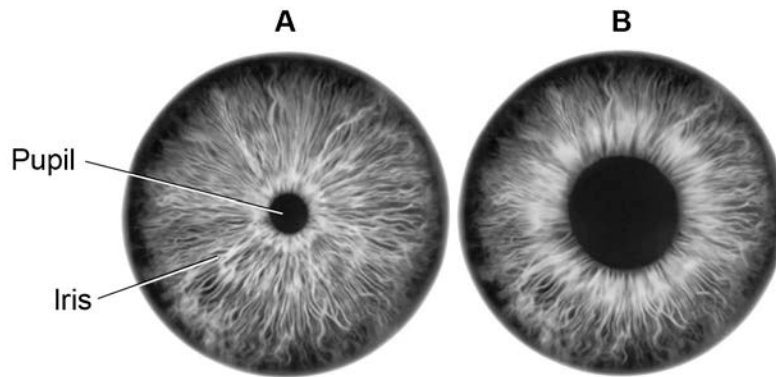


**0 5**

**Figure 4** shows a reflex in the iris of the human eye in response to changes in light levels.

**Figure 4****0 5****1**

Describe the changes in the pupil and iris going from **A** to **B** in **Figure 4**.

Explain how these changes occur.

Refer to the changes in light level in your answer.

**[4 marks]**

---

---

---

---

---

---

---

---

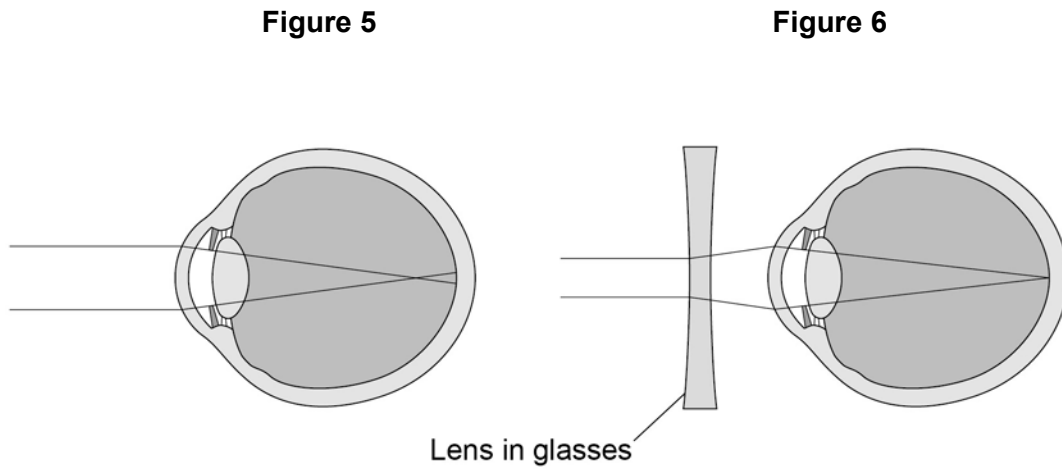
---

---

**0 5** . **2** Some people wear glasses to improve their vision.

**Figure 5** shows light entering the eye in a person with blurred vision.

**Figure 6** shows how this condition is corrected with glasses.



Compare **Figure 5** and **Figure 6**.

Explain how the blurred vision is corrected.

**[2 marks]**

---

---

---

---

---

---

---

**Turn over for the next question**

**Question 5**

Question	Answers	Extra information	Mark	AO / Spec. Ref.
<p><b>05.1</b></p>	<p>pupils dilated (at <b>B</b>)</p>	<p>allow converse for <b>A</b></p>	<p>1</p>	<p>AO2/1 4.5.2.3</p>
	<p>in dim light / low light levels</p>		<p>1</p>	<p>AO1/1 4.5.2.3</p>
	<p>because circular muscles (in iris) relax</p>		<p>1</p>	<p>AO2/1 4.5.2.3</p>
	<p>(and) radial muscles contract</p>		<p>1</p>	<p>AO2/1 4.5.2.3</p>
<p><b>05.2</b></p>	<p>figure 5 shows myopia where light does not focus on the retina</p>	<p>allow refraction</p>	<p>1</p>	<p>AO1/1 4.5.2.3</p>
	<p>in figure 6 the lens bends the light so that light focuses on the retina</p>		<p>1</p>	<p>AO1/1 4.5.2.3</p>
<p><b>Total</b></p>			<p><b>6</b></p>	