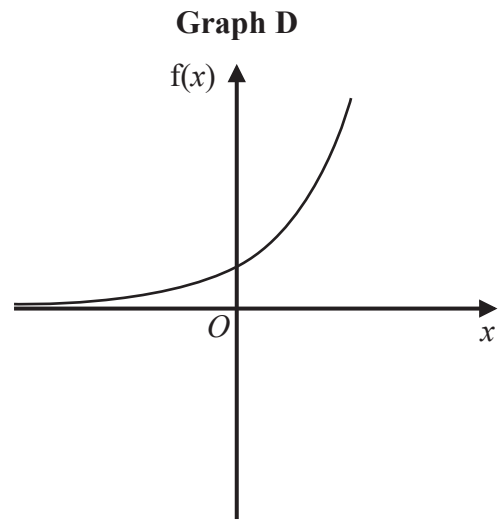
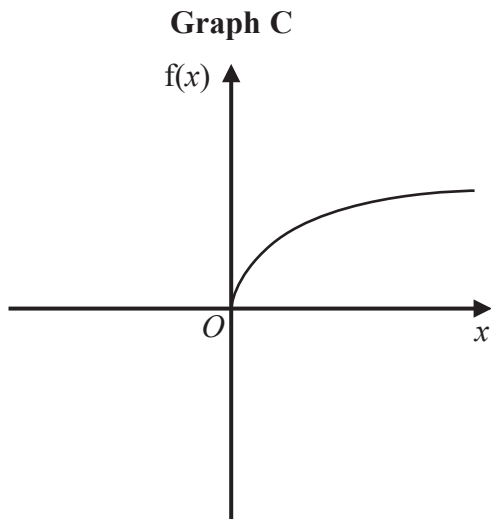
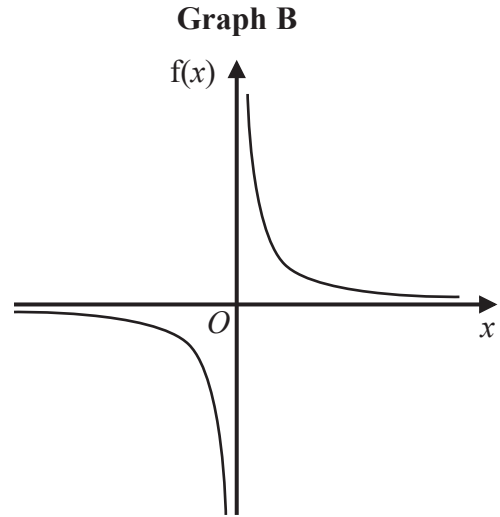
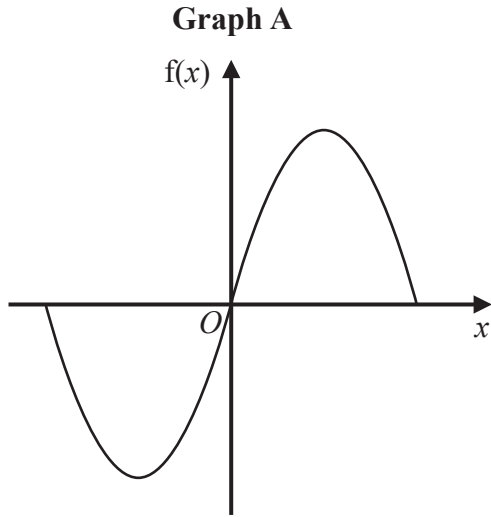


17 Here are four graphs.



The graphs represent four different types of function  $f$ .

Match each description of the function in the table to the letter of its graph.

| Description of function                       | Graph |
|---|-------|
| $f(x)$ is inversely proportional to $x$       |       |
| $f(x)$ is a trigonometrical function          |       |
| $f(x)$ is an exponential function             |       |
| $f(x)$ is directly proportional to $\sqrt{x}$ |       |

(Total for Question 17 is 2 marks)

DO NOT WRITE IN THIS AREA

DO NOT WRITE IN THIS AREA

DO NOT WRITE IN THIS AREA

